



*New Palestine High School Band Department
4485 Victory Lane
New Palestine, IN 46163
(317) 861-4417 ext. 215*

Directors,

Thank you for participating in the 2017 New Palestine High School IPA Winter Percussion Competition. We look forward to offering you an outstanding judge panel and great facilities to aide in your competition setting. I hope your experience at New Palestine High School is both educational and enjoyable.

Enclosed in this packet you will find:

- *Information Regarding the Contest*
- *Directions to New Palestine*
- *Map of New Palestine HS*
- *Contest Schedule*
- *Concessions Menu*

Location of Contest: New Palestine High School
4485 Victory Lane
New Palestine, IN 46163

Times of Contest:

Doors will open at 11:00am for spectators, with the first performance beginning at 12:00pm. See enclosed schedule for details. Please note that schedules are subject to change.

Admission Prices:

\$7Adults
\$5/Students (K-12, college) and Seniors (65+)
Children under 6 are free
School Principals admitted free of charge with valid ID

Check – In Procedures:

There will be separate A & B check-in areas (*please consult maps*).

Both groups will enter the Southwest lot from County Road 500W (*Gem Road*) and proceed to their Check-In. These directions will be provided by the New Palestine Band Booster Parking Volunteer stationed at the Southwest Lot Entrance off of 500W.

Check – In Procedures (cont’d)

“A” Groups will proceed to Door #34, near the North Entrance for Group Check-In & Unloading.

“B” Groups will proceed to Door #4/Alternate Entrance for Group Check-In & Unloading.

All equipment, performers, staff members and volunteers will check-in at their respective entrance. There will not be a separate check – in for equipment and students. Consequently, your bus and equipment vehicles will use the same entrance. A director must be present to receive the director’s packet, including storage area assignment, 8 wristbands for volunteers. Please do not unload buses until the director has checked-in. After the director has received the packet/instructions, students and equipment may be unloaded. A guide will take you immediately to your homeroom, orient you as to the layout of the school and answer any questions that you may have.

Spectator Entrance:

The main spectator entrance will be located at Door #1 / the Main High School Entrance (*See Campus Map*).

Hospitality Rooms:

Directors: located in the Media Center (*See School Map*).

Drivers: located in the Family and Consumer Science Room (*See School Map*). Finger food will be available in this room.

Concessions:

Please encourage your extended staff, students, parents and friends to enjoy our concessions. Our boosters do a great job in this area and we will have some great food on hand. A menu has been included for your convenience.

Unit Storage Area:

Please note that there will be assigned areas taped off throughout the school to put your personal belongings. Since these areas is not secure, NPHS is not responsible for any lost or stolen items.

Please apply make-up, hairspray, glitter, nail polish, etc. in the restrooms. Homerooms are to be used as a gathering/resting room, not dressing/make-up room. Your guide will

accompany you to your Warm-Up at transit time. Thank You.

Dressing Facilities:

Restrooms are available on site. In addition to your storage areas, please do not leave valuable personal items in the restrooms. IPA or the contest sponsors are not responsible for any lost items.

Equipment Protection:

Any equipment and/or props used in performance must be protected so as not to damage the floor. Should damage occur the participating school is responsible for said repairs.

Inspection:

Equipment inspection will take place in the Unloading Area.

Timeline:

The timeline at our show is Horizontal.

Participant Seating:

All student participants are asked to enter view performances from the 2nd floor and sit only in the upper level. The entrance to the 2nd floor level is found in the hallway between Spectator Entrance and Check In B. This will alleviate congestion at Spectator Entry doors – and allow more more spectators in and out of the performance gym before the doors must be closed.

DVD's, MP3s, and Sheets:

IPA has contracted Box 5 Productions to do the filming of all IPA contests. DVD fees have been included in each units' show entry fees. All video recordings will be uploaded to Competition Suite.

All judge's digital commentary will be available on Competition Suite shortly after your performance. Comments will be sent to you via text notification and available by logging into Competition Suite.

Awards:

Awards will be captains only. Captains of all performing groups will organize in performance order for awards in the south lobby of the main gym immediately following the last performance before your awards ceremony. Thank you for your cooperation.

Critique:

Critique will be held ASAP after the final competitive performance of the day in the Media Center in performance order.

First Aid:

First Aid will be available on site, located near the competitor exit door, **inside** the performance gym.

Entrance & Exit Information:

Please note specific maps are included in this packet. “A” Units will enter the back left corner of the gym while “B” Units will enter the back stage right corner of the gym. EVERYONE will exit the front right corner of the gym (*see enclosed maps*).

Equipment Unloading and Loading:

You may unload **ONE** hour prior to your warm-up time. Contest Officials will be in the holding areas to direct you to your assigned equipment area. After you have unloaded, please make arrangements to move your truck(s) to the loading area at the proper time parallel to your performance to ensure proper flow of the contest. All equipment and props must be removed from the building **immediately following** your performance. After you have loaded we ask that your truck be moved to the Equipment & Bus Parking Area. (*see enclosed maps*)

Contest Head Quarters:

Contest Headquarters will be located in the Athletic Office, across the hall from the spectator entrance of the performance gym. Please visit this area with any general questions for the contest director.

Judges:

MUSIC	:	Peter Furnari
EFFECT-MUSIC:		Chad Heiny
EFFECT VISUAL:		Bob Jones
VISUAL:		Steve Collins
WINDS:		Tim Johnston
T & P:		Chris Tomsa

Contact:

Shawn A. Humphries – Director
Work: 317-861-4417 ext. 215
Email: shumphries@newpal.k12.in.us
Cell: 317-385-9832 – Day of Contest

Mike Wilson-Contest Coordinator
Email: jmike1701@yahoo.com
Cell: 317-372-6224 – Day of Contest

DIRECTIONS TO NEW PALESTINE HIGH SCHOOL

New Palestine High School is located in New Palestine, Indiana on US 52 (Brookville Rd.) 8 miles east of I465 on the east side of Indianapolis.

Competing units can access I465 (Indianapolis beltway)
from the North (using I69, I65, US31 or IN431)
from the South (using I65, US31, IN37 or IN67)
from the East (using I74 or I70)
or from the West (using I70 or I74).

Once competing units access I465 (Indianapolis Beltway), please travel to the US 52 (Brookville Rd.) Exit #47 (located on the east side of I465).
Note: units traveling from the west may find it easier to travel along the southern portion of I465 to get to Exit#47.

Take US 52 (Brookville Rd.) east for 8 miles to get to New Palestine and New Palestine High School.

Although New Palestine High School is located on the south side of US 52 (Brookville Rd.), please have buses and trucks enter the campus via the southwest parking lot by turning South on 500W from US52.

Note: Schools traveling from the east may choose to access US 52 (Brookville Rd.) using one of two other options:

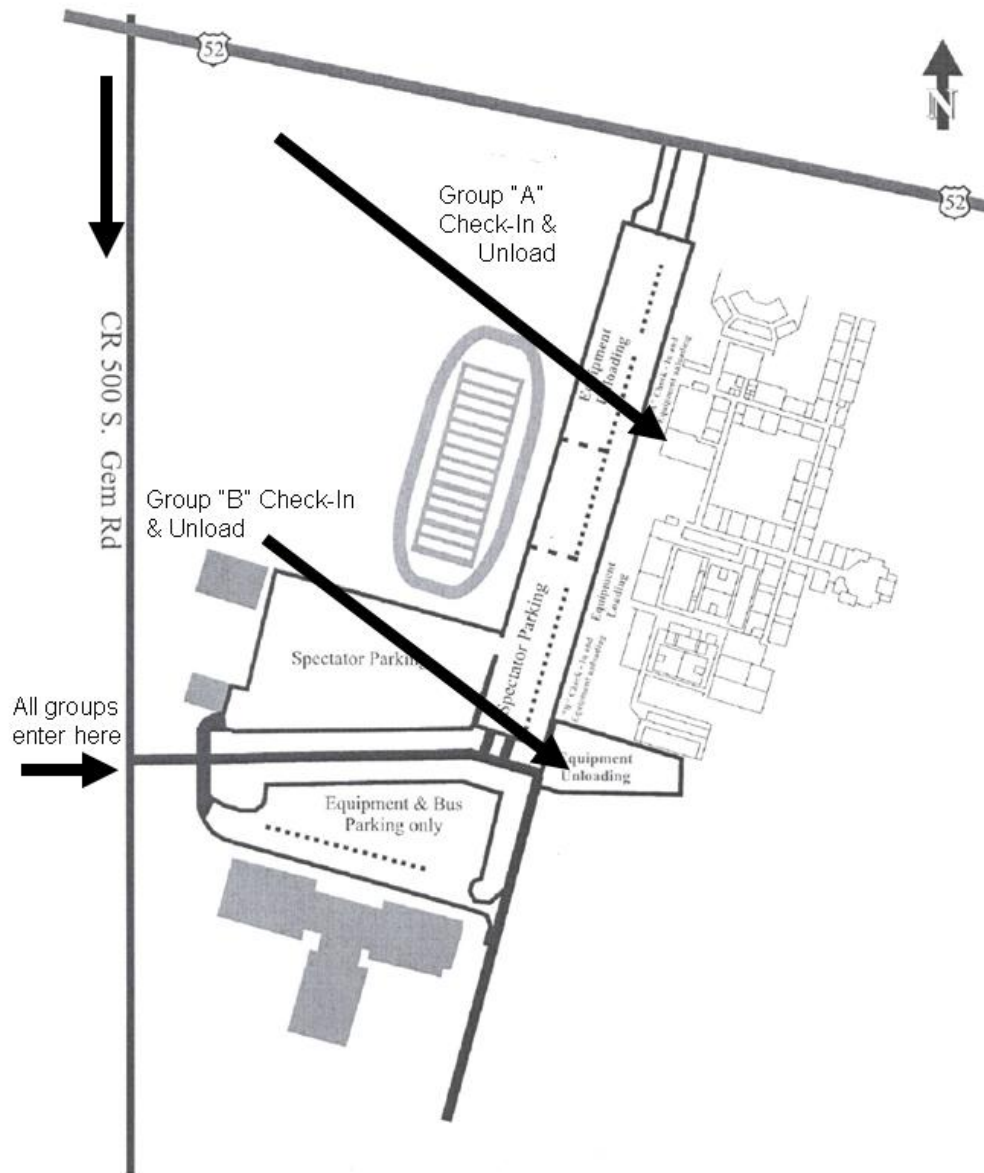
1. I70 west to Mount Comfort Rd. / Exit#96. Take Mount Comfort Rd. south (6.5 miles) to US 52 (Brookville Rd.) Take US 52 (Brookville Rd.) east (.5 miles) to New Palestine, In.
2. I74 west to IN 9 / Exit #113. Take IN 9 north (10miles) to US 52 (Brookville Rd.) Take US 52 (Brookville Rd.) west (7miles) to New Palestine, In.



Overview Map



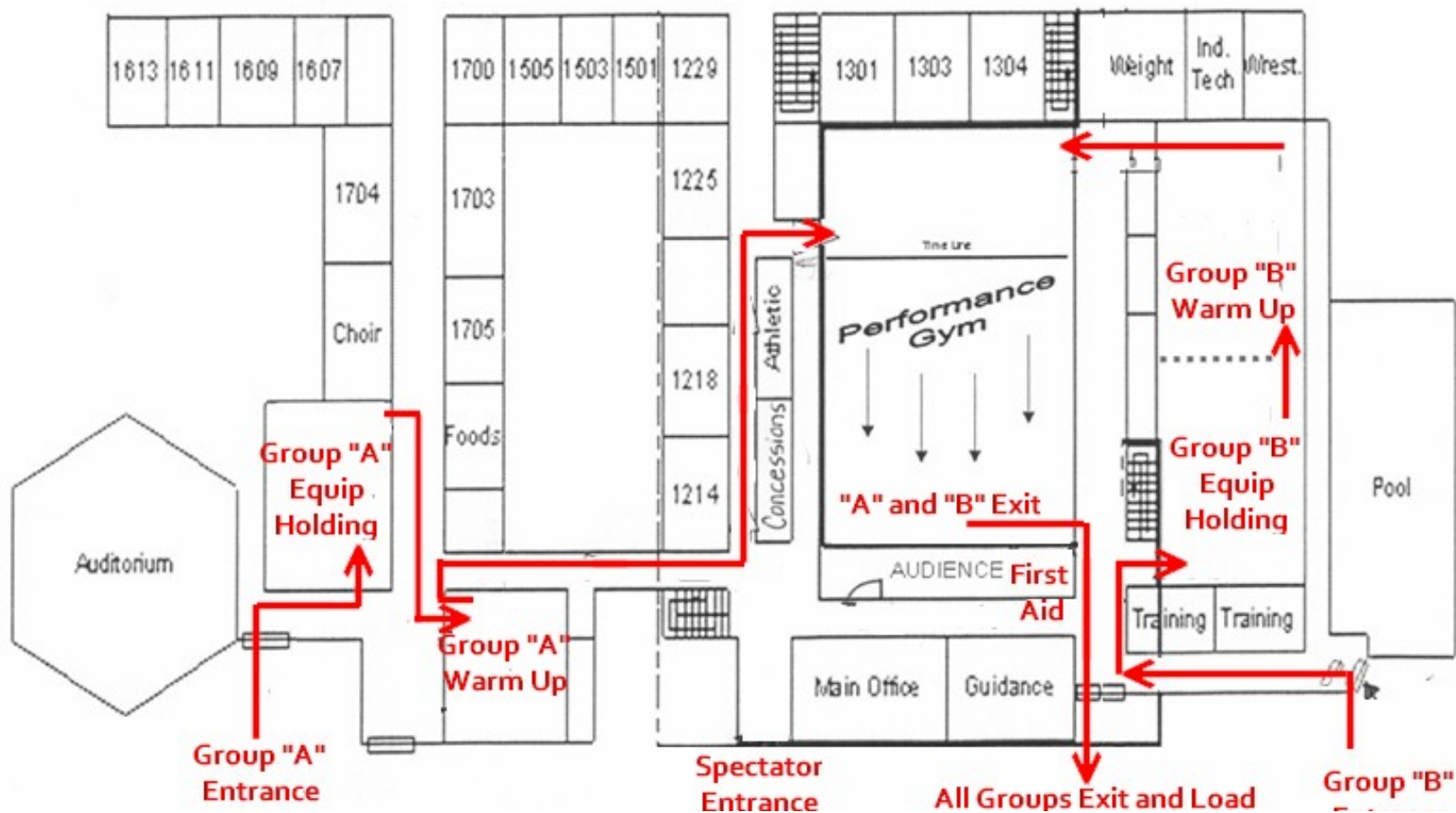
Campus Map



New Palestine High School
Overview Map

New Palestine High School

Flow Map



IPA 2017 Gym Performance Layout

